

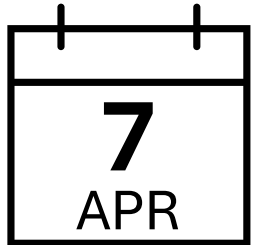
# **SMART SCALE Round 7 Update CA-MPO and Rural Projects**

**CA-MPO Technical Committee Meeting  
June 2, 2026**



# Recap – April Tech Committee Meeting

---



- Committee **recommended adoption** of the resolution endorsing the submission of SMART SCALE applications for projects submitted by Albemarle and Charlottesville
- Committee **recommended adoption** of resolutions of support for
  1. US29 NB/US250 EB Off-Ramp and Pedestrian Improvements at Barracks Road
  2. I-64/5<sup>th</sup> Street DDI
  3. Old Ivy Rd On-Ramp/Leonard Sandridge Rd Off-Ramp Aux. Lane Ramp
- Committee **deferred taking action** on making a recommendation to the Policy Board for US 29/250 SB Off-Ramp Extension to Old Ivy Rd until the June Technical Committee meeting

# Subsequent Meetings and Updates

---

## Commonwealth Transportation Board (CTB) Meeting

- CTB **approved** an update to SMART SCALE policy allowing innovative intersections as an eligible project type in the High Priority Projects (HPP) program (*Refer to Staff Report for OIPI Round 7 Update presentation*)

## CA-MPO Policy Board Meeting



- Policy Board **approved** the resolution endorsing the submission of SMART SCALE applications for projects submitted by Albemarle and Charlottesville
- Policy Board **approved** resolutions of support for all CA-MPO applications
  1. US29 NB/US250 EB Off-Ramp and Pedestrian Improvements at Barracks Road
  2. I-64/5<sup>th</sup> Street DDI
  3. Old Ivy Rd On-Ramp/Leonard Sandridge Rd Off-Ramp Aux. Lane Ramp
  4. US 29/250 SB Off-Ramp Extension to Old Ivy Rd until the June Technical Committee meeting

# Next Steps for SMART SCALE

---

- **May:** OIPI/VDOT/DRPT review pre-applications to provide feedback and screening decisions
- **June 1:** Round 7 Full Applications Open
- **June 15:** Charlottesville City Council Resolution of Support
- **June 17:** Albemarle County Board of Supervisors Resolutions of Support
- **July 15:** Supporting documentation for all applications due
- **August 3:** Final application deadline
- **January 2027:** Staff-Recommended Funding Scenario presented
- **June 2027:** Projects selected for funding by the Commonwealth Transportation Board and Adopted into the SYIP

# Where are we in the process?

We Are Here



# Rural Jurisdiction SMART SCALE Round 7 Projects

# Rural Jurisdiction Round 7 Projects

---

## **Albemarle County**

No applications outside of the urbanized area

## **Fluvanna County**

No applications

## **Greene County**

1. Rt. 29-616 RCUT Project
2. US 33-743 (Advance Mills) and 1050 (Greencroft) Intersections

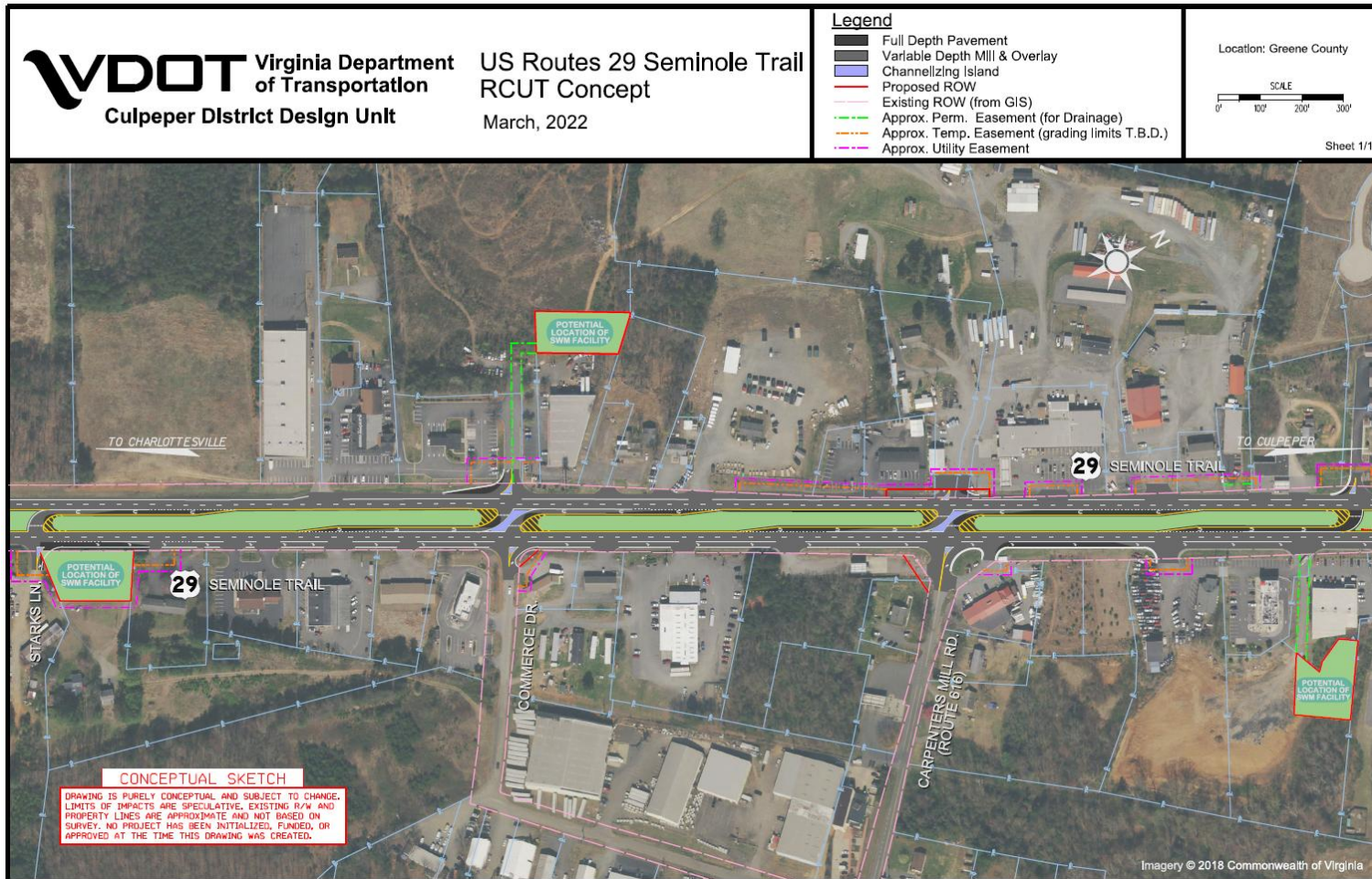
## **Louisa County**

No applications

## **Nelson County**

1. Rockfish School Lane and Route 151 Turn Lanes
2. US 29 Corridor Improvements – Route 655 to VA 56

# Greene County: Rt. 29-616 RCUT Project



## VTrans Priority 2-3 Needs

- Capacity Preservation
- Safety Improvements
- Transportation Demand Management
- Transit Access

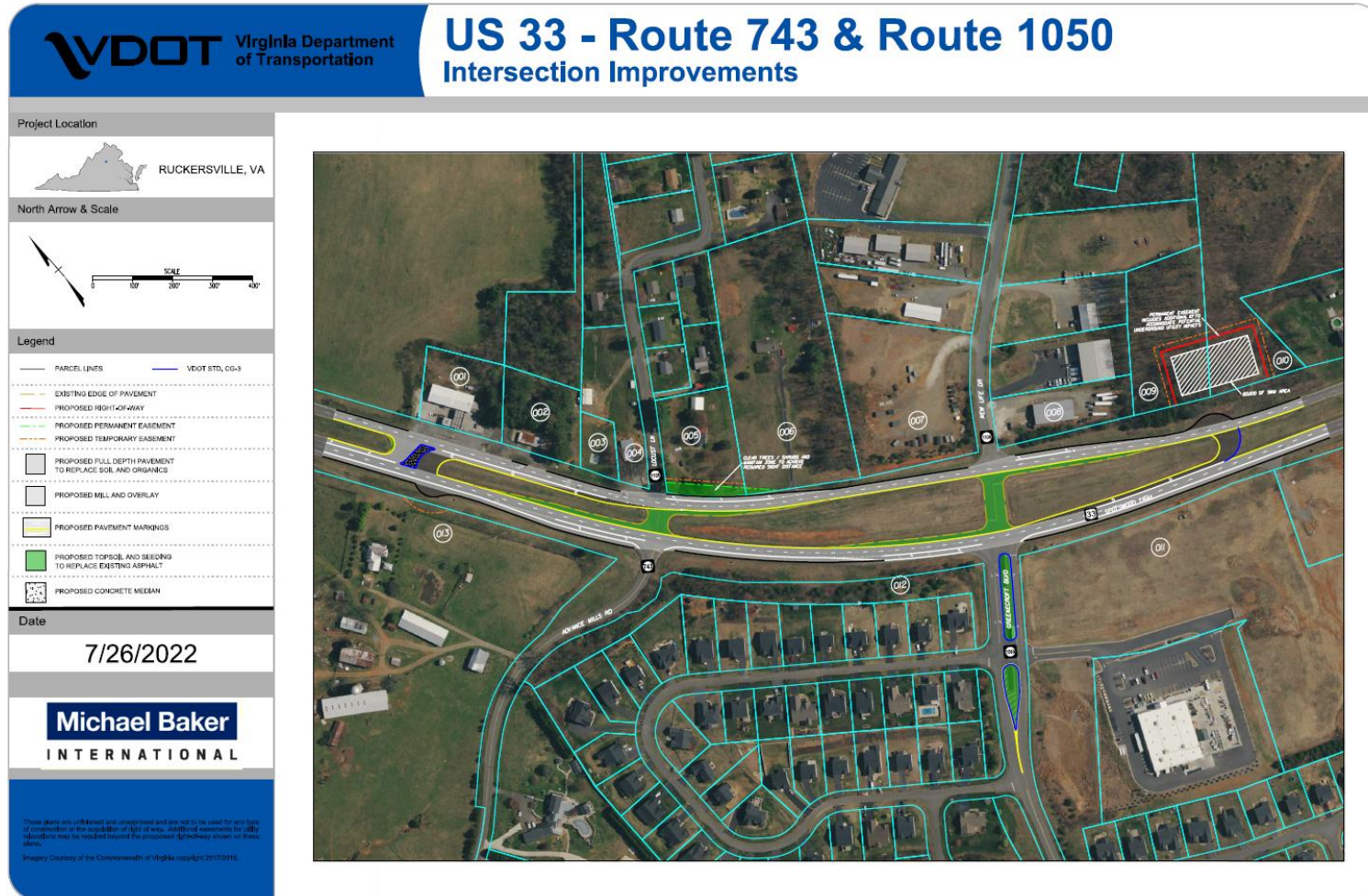
**Project area includes a Potential for Safety Improvement (PSI) intersection and segment**

## Project Components:

1. Install a restricted crossing U-Turn (RCUT) at US 29 and Commerce Drive
2. Install an RCUT at US 29 and Route 616 (Carpenters Mill Rd)
3. Extend the SB U-Turn turn lane at US 29/Starks Lane
4. Construct 1 NB channelized U-Turn lane south of US 29/US 33
5. Close the crossover at US 29/El Agave south of US29/US 33
6. Improve safety by reducing the number of conflict points; reduce operational delays

**Preliminary Cost: \$23,624,772**

# Greene County: US 33-743 (Advance Mills) and 1050 (Greencroft) Intersections



### VTrans Priority 4 Needs

- Safety Improvements
- Transit Access

***Project area includes a Potential for Safety Improvement (PSI) segment***

### **Project Components:**

1. Implement median U-Turns by closing median crossings at US 33/Advance Mills Rd and US 33/Greencroft Blvd
2. Construct U-Turn lane on WB US 33 west of Advance Mills Rd
3. Extend existing EB right turn lane at US 33/Advance Mills Rd
4. Construct turning loons on both U-Turn lanes
5. Install median island on US 33 median crossing on Greencroft Blvd from Ridgemont Rd to US 33 to remove existing through movement
6. Improve safety by reducing the number of conflict points

**Preliminary Cost: \$13,980,960**

# Nelson County: Rockfish School Lane and Route 151 Turn Lanes



## Custom VTrans Need<sup>1</sup>

- Safety Improvements

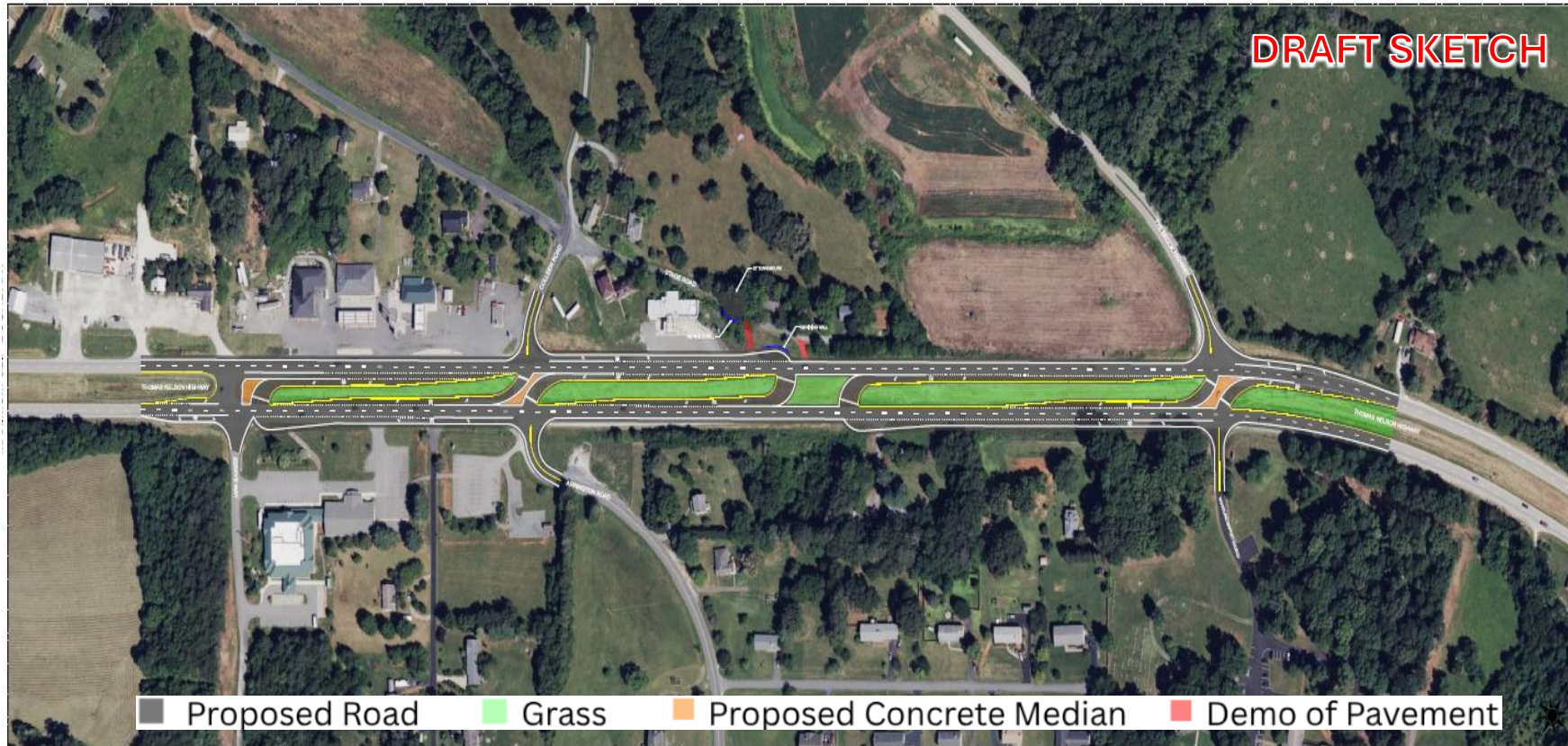
## **Project Components:**

1. Install dedicated right turn lanes in the southbound and eastbound legs of the Rockfish School Lane and Rockfish Valley Highway intersection
2. Improve safety by providing space to separate turning vehicles from through traffic

**Preliminary Cost: \$2,556,642**

1: Per the SMART SCALE Technical Guide p.16-17: "... applicants can propose safety improvements to address a safety issue not identified as a 2023 or 2025 VTrans Mid-term Need based on a safety analysis/study that includes [study components]... The project location must have had at least three Fatal or Injury crashes at the intersection or segment over the last five years for it to be consistent with the CTB's VTrans Mid-term Needs Identification Policy."

# Nelson County: US 29 Corridor Improvements – Route 655 to VA 56



## VTrans Priority 1-4 Needs

- Capacity Preservation
- Transportation Demand Management
- Safety Improvements

***Project area includes a Potential for Safety Improvement (PSI) segment and two PSI intersections***

## **Project Components:**

1. Convert the intersections of US 29 and Route 655 (Arrington Rd and Colleen Rd) and VA 56 (Tye Brook Hwy) into Reduced Conflict Intersections (RCIs)

**Preliminary Cost: \$19,802,452**